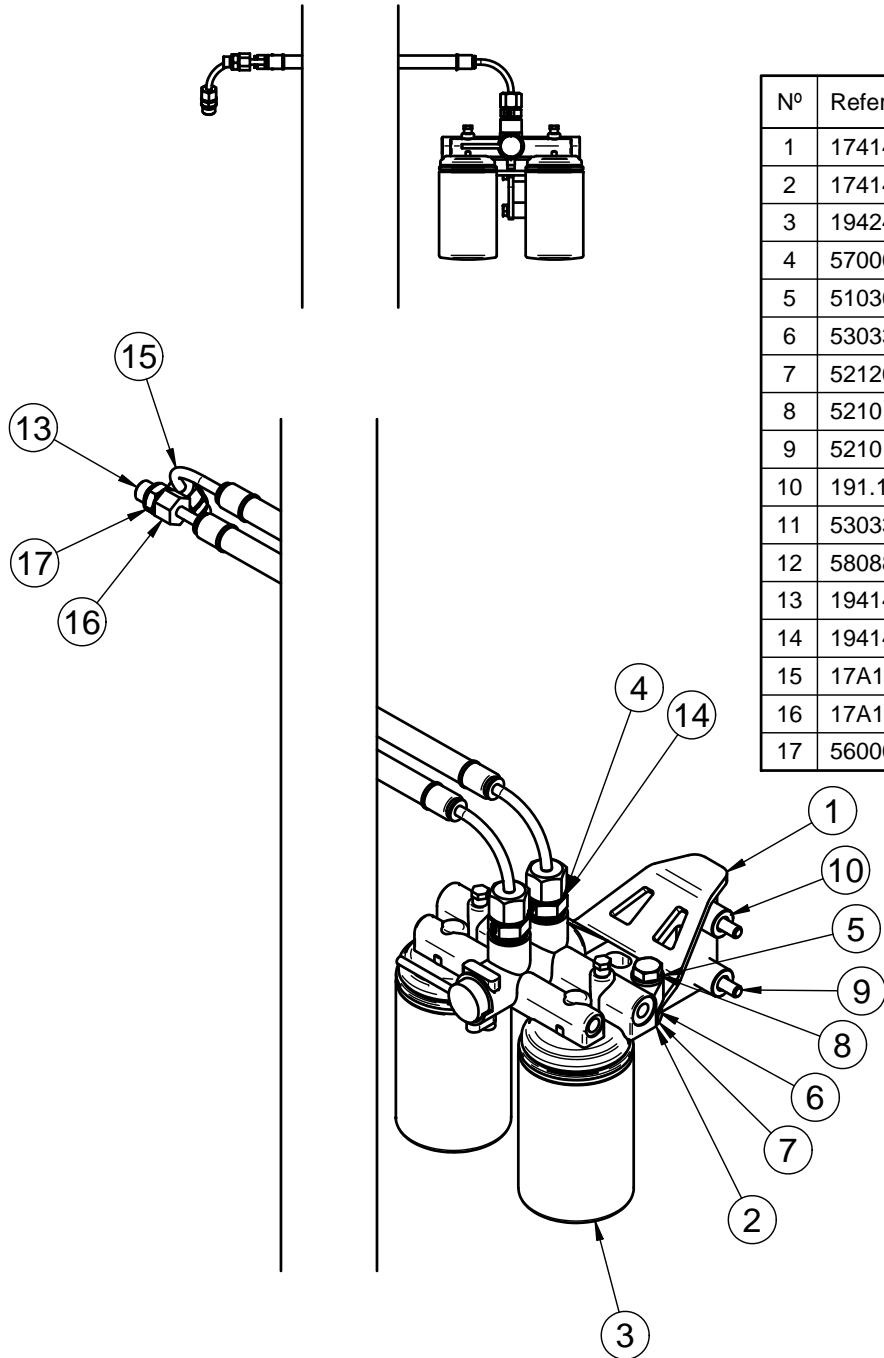


## REVISION HISTORY

| REF. | DATE | DESCRIPTION |
|------|------|-------------|
| (1)  |      |             |
|      |      |             |

| Nº | Referencia | Descripción                       | Asunto                  | Material     | Cant. |
|----|------------|-----------------------------------|-------------------------|--------------|-------|
| 1  | 17414003   | SOPORTE FILTRO GAS-OIL DOBLE      | DOUBLE FILTER BRACKET   | F-111        | 1     |
| 2  | 17414002   | TAPA PORTA FILTRO GAS-OIL DOBLE   | FILTER BRACKET          |              | 1     |
| 3  | 19424022   | FILTRO GAS-OIL                    | ELEMENT FILTER          |              | 2     |
| 4  | 57000378   | ARANDELA ALUMINIO 18.2-24-1.5     | ALUMINIUM WASHER        | Aluminio     | 4     |
| 5  | 51030010   | ARANDELA PLANA Ø10 DIN125         | WASHER Ø10 DIN125       | Acero        | 2     |
| 6  | 53033010   | ARANDELA GROWER Ø10 DIN-127       | GROWER WASHER Ø10       | Acero        | 2     |
| 7  | 52120010   | TUERCA M10 DIN 934                | M10 DIN 934 NUT         | Acero        | 2     |
| 8  | 52101311   | TORNILLO M10x40 DIN 931 8.8       | BOLT M10x40 DIN 931 8.8 | Acero 8.8    | 2     |
| 9  | 52101261   | TORNILLO DIN 931 M8x40 8.8        | BOLT DIN 931 M8x40 8.8  | ACERO 8.8    | 2     |
| 10 | 191.17.014 | GRUESO Ø20/Ø10.5                  | SPACER 10,5X20X20       | F-112 Calib. | 2     |
| 11 | 53033008   | ARANDELA GROWER DIN 127-8 CINCADA | GROWER DIN 127 Ø8       | Acero        | 2     |
| 12 | 58088284   | ABRAZADERA PLASTICO NEGRA 4.8x200 | PLASTIC CABLE ZIP TIES  | NYLON        | 3     |
| 13 | 19414024   | RACOR                             | FITTING 3/8"-M14X150    |              | 2     |
| 14 | 19414039   | RACOR M-M M18x150-M20x150         | RACOR FITTING M-M       | AISI-316L    | 2     |
| 15 | 17A14004   | TUBO COMBUSTIBLE DNV              | FUEL HOSE               |              | 1     |
| 16 | 17A14005   | TUBO COMBUSTIBLE DNV              | FUEL HOSE               |              | 1     |
| 17 | 56000069   | ARANDELA COBRE Ø20/14x1.5         | COPPER WASHER           | Cobre        | 4     |



|                               |                          |                       |                                     |                           |                      |                          |                                      |                      |
|-------------------------------|--------------------------|-----------------------|-------------------------------------|---------------------------|----------------------|--------------------------|--------------------------------------|----------------------|
| Limits for Nominal sizes (mm) |                          | over 100 to 300       | <b>KIT DOBLE FILTRO GAS-OIL DNV</b> |                           |                      |                          |                                      |                      |
|                               |                          | over 30 to 100        | <b>KIT 2nd FUEL FILTER</b>          |                           |                      |                          |                                      |                      |
| from 0 to 6                   | over 6 to 30             | ±0.05<br>±0.1<br>±0.2 | ±0.15<br>±0.3<br>±0.5               | ±0.2<br>±0.4<br>±0.8      | ±0.5<br>±1.0<br>±1.2 | ±0.2<br>±0.5<br>±1.2     |                                      |                      |
| Tolerance Class<br>DIN-7168   | Fine<br>Medium<br>Coarse | MATERIAL              |                                     | FINISH                    |                      | TREATMENT                | Remove All Burrs.<br>And Sharp Edges | SCALE<br>/.          |
| DRAWN<br>P.IGLESIAS           |                          | CHECKED<br>V.MIRAVET  |                                     | Tolerance Class<br>Medium |                      | DRAWN DATE<br>09/08/2018 |                                      | LAST DATE REV.<br>-- |
|                               |                          | <b>SOLE, S.A.</b>     |                                     | <b>17B14000DNV</b>        |                      |                          |                                      |                      |