

## Mains Power Monitoring System Kit: Panel CO 20

The panel CO 20 is a controller for single generator sets operating in standby mode.

CO 20 models enable the combination of manual and remote start application with auto mains fail function. The controller is intuitive to use, easy to configure and spare costs for commissioning and maintenance.

CO 20 models feature a powerful graphic display providing user-friendly information in an easy to understand format.



Dimensions: 187 x 110 mm

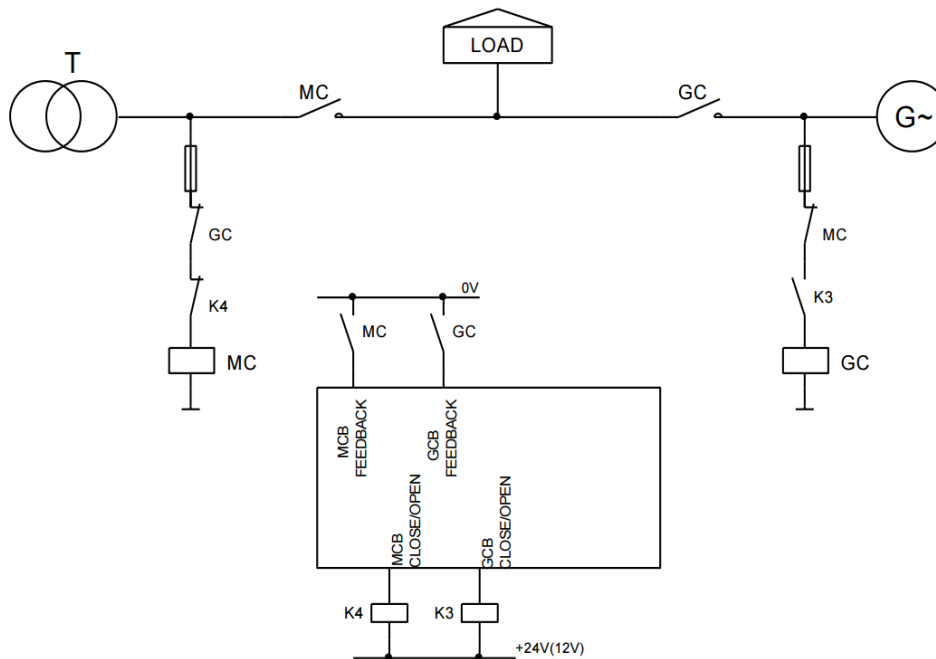
### Benefits

- Less wiring and components
- Less engineering and programming
- Remote monitoring reduced call-out costs of service engineers
- Perfect price/performance ratio
- History log

### Features

- Automatic or manual start/stop of the gen-set
- Push buttons and LEDs for simple control
- Graphic back-lit LCD display 128×64 pixels
- Mains measurements (50/60 Hz): V (3 phase), Hz
- Generator measurements (50/60 Hz): V, A (3 phase), Hz, kW, kVAr, kWh
- Battery voltage, engine speed (pickup) measurement
- Event based history file
- Dimensions 180×120 mm (front panel)
- Protection IP65

## Example of typical application Stand-by

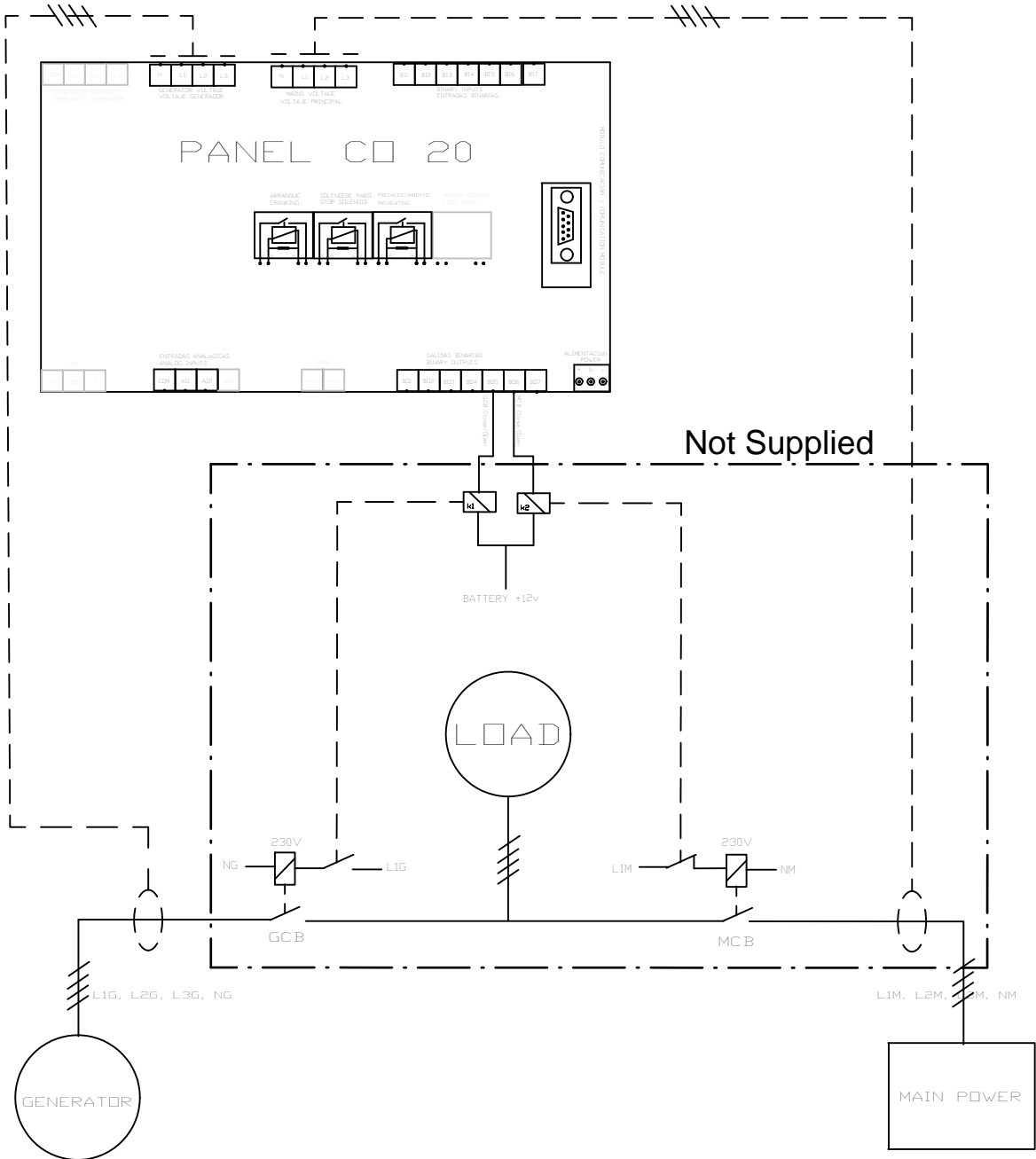


## Scope of supply


- Equipment supplied
  - CO 20 controller with con basic programming (Engine parameters and GC/MC Close/Open Outputs already programmed).
  - Basic wiring Controller-Engine.
- Equipment not supplied
  - Switching system (According the example nomenclature: Contactor K3, K4, GC, MC, wiring between them).
  - Specific programming adapted to the switching system chosen.
  - For the startup, it is mandatory a **participation / cooperation of an authorized service COMAP**. The system requires adapt programming to installation on board.



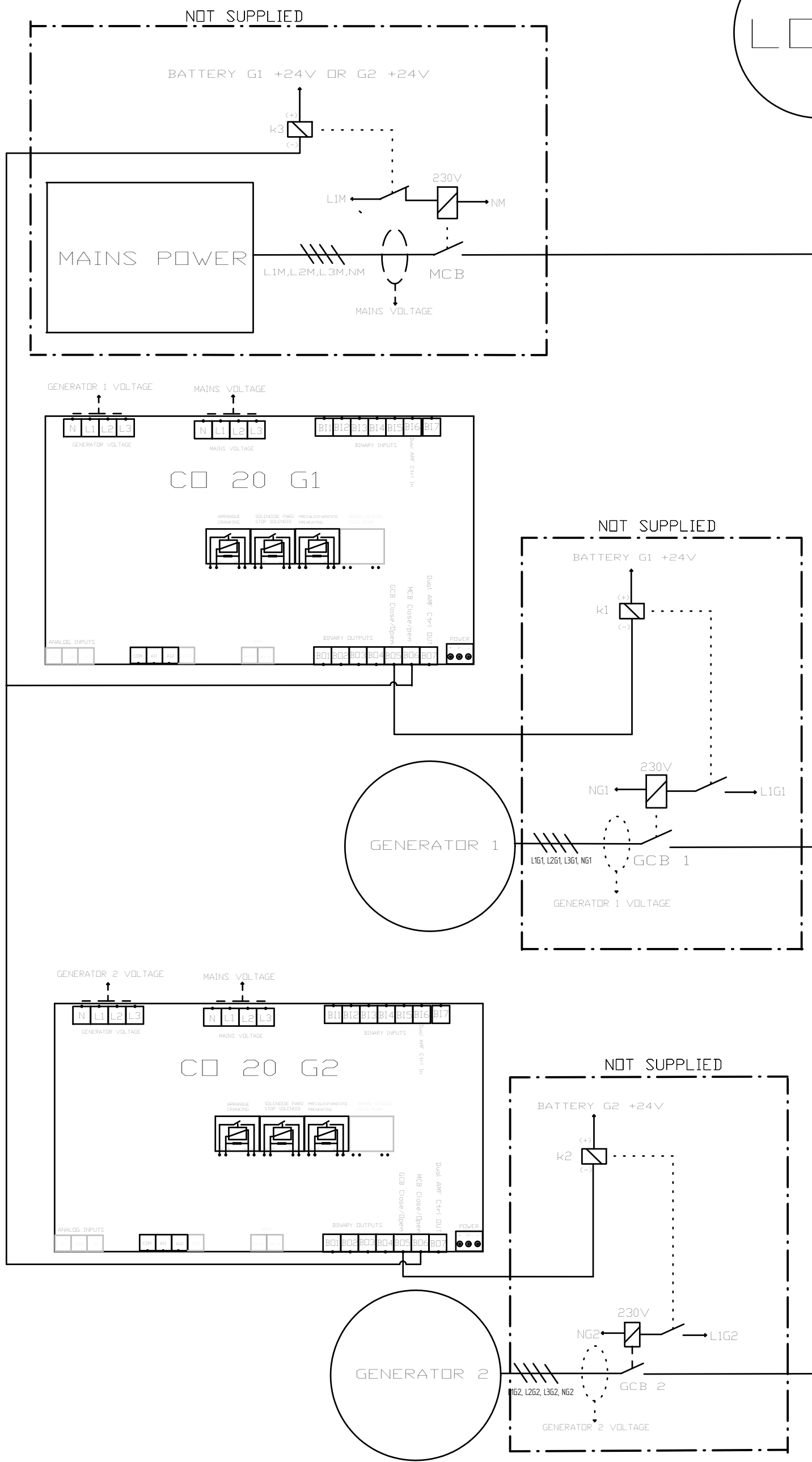
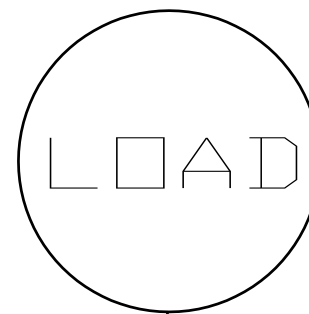
# Possible application CO 20 Panel (Example)



- L1G Generator Phase 1
- L2G Generator Phase 2
- L3G Generator Phase 3
- NG Generator Neutral
- L1M Mains Phase 1
- L2M Mains Phase 2
- L3M Mains Phase 3
- NM Mains Neutral
- Not supplied

DIBUJADO	VERIFICADO	FECHA CREACIÓN	ÚLTIMA REVISIÓN	PÁGINA
RUBEN D.	SUBACH	08/02/2016		
 <b>SOLÉ, S.A.</b>		CO 20 PANEL		

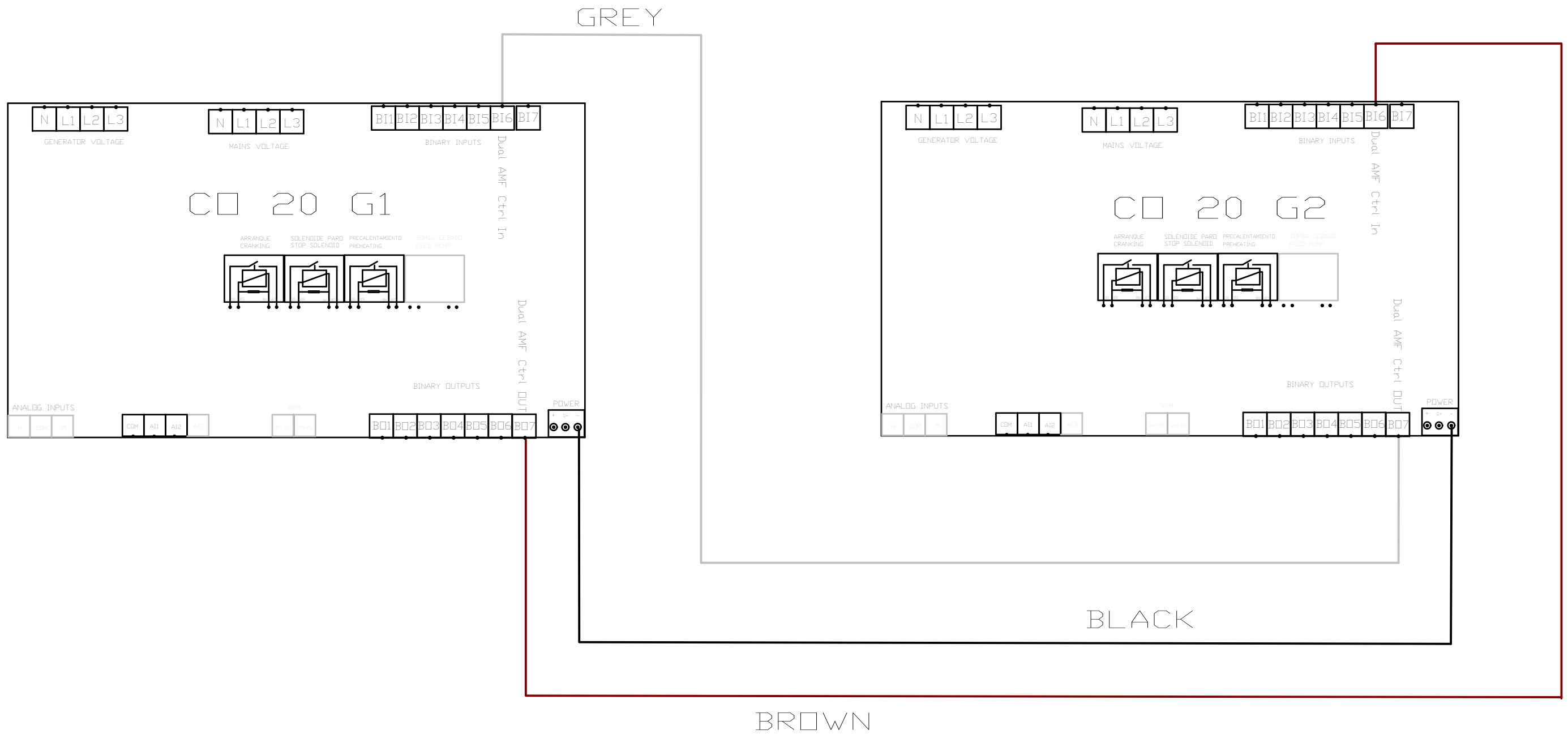
# Possible application Dual System (Example)




- L1G1 Generator 1 Phase 1
- L2G1 Generator 1 Phase 2
- L3G1 Generator 1 Phase 3
- NG1 Generator 1 Neutral
- L1G2 Generator 2 Phase 1
- L2G2 Generator 2 Phase 2
- L3G2 Generator 2 Phase 3
- NG2 Generator 2 Neutral
- L1M Mains Phase 1
- L2M Mains Phase 2
- L3M Mains Phase 3
- NM Mains Neutral

DIBUJADO RUBEN D.	VERIFICADO S.SUBACH	FECHA CREACIÓN 08/02/2016	ÚLTIMA REVISIÓN	PÁGINA
<b>SOLÉ, S.A.</b>		CO 20 PANEL DUAL SYSTEM		

# Diagram connection between panels



DIBUJADO	VERIFICADO	FECHA CREACIÓN	ÚLTIMA REVISIÓN	PÁGINA
RUBEN D.	SUBACH	08/02/2016		
 <b>SOLE, S.A.</b>		CO 20 PANEL DUAL SYSTEM		