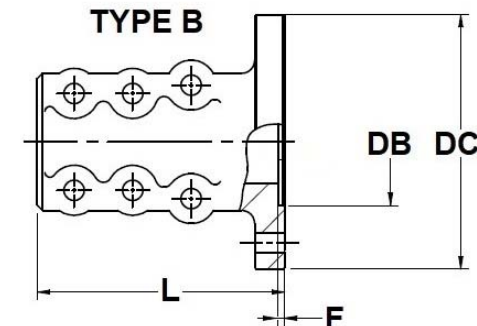
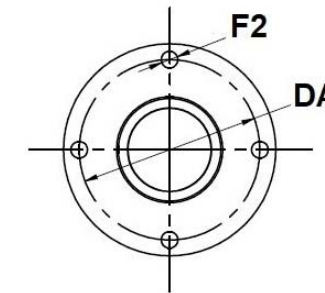
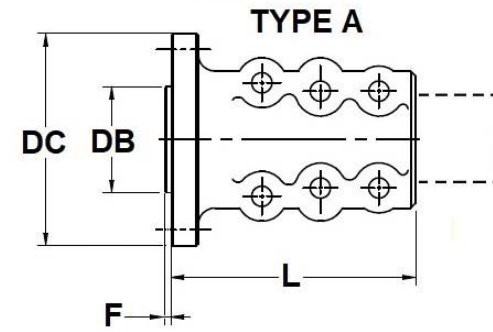
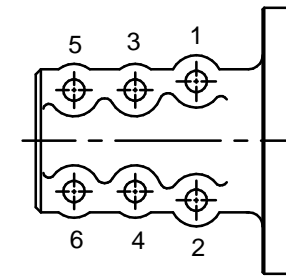


TABLE OF DIMENSIONS AND PART NUMBERS
TABLA DE DIMENSIONES Y REFERENCIAS

Ø Eje Shaft	Tipo Type	F2	DB	L	DA	DC	F	Tornillos Transmisión GearBox Bolts	Tornillos Brida Clamp-on Bolts	Referencia Part Number
19	A	9	33	64	50	62	3	3 x DIN 931 M8-30 12.9	2 x DIN 912 M8-35 12.9	40019106K**
19	A	10,5	50	67	78	100	3	4 x DIN 931 M10-40 12.9	2 x DIN 912 M8-35 12.9	40019109K**
22	A	10,5	63,5	83	82,5	102	2	4 x DIN 931 M10-40 12.9	4 x DIN 931 M10-50 8.8	40022106K
22	A	9	53	65	77	93	2	2 x DIN 931 SAE 3/8-40 12.9	2 x DIN 931 M10-50 8.8	40022107K
22	A	M10	50	94	78	102	2	4 x DIN 933 M10-25 8.8	4 x DIN 931 M10-50 8.8	40022109*
25	A	9	33	64	50	62	3	3 x DIN 931 M8-30 12.9	2 x DIN 912 M8-35 12.9	40025103K**
25	A	10,5	63,5	81	82,5	102	2	4 x DIN 931 M10-40 12.9	4 x DIN 931 M10-50 8.8	40025106K
25	B	10,5	60	83	80	102	4	4 x DIN 931 M10-40 12.9	4 x DIN 931 M10-50 8.8	40025108K
25	A	10,5	50	82	78	100	3	4 x DIN 931 M10-40 12.9	4 x DIN 931 M10-50 8.8	40025109K
25	A	10	65	63	77	93	2	2 x DIN 931 SAE 3/8-40 12.9	2 x DIN 931 M10-50 8.8	40025117K
30	A	10,5	63,5	104	82,5	102	2	4 x DIN 931 M10-40 12.9	6 x DIN 931 M10-50 8.8	40030106K
30	B	10,5	60	106	80	102	4	4 x DIN 931 M10-40 12.9	6 x DIN 931 M10-50 8.8	40030107K
30	A	11,5	63,5	105	108	127	2	4 x DIN 931 SAE 7/16-40 12.9	6 x DIN 931 M10-50 8.8	40030108K
30	A	10,5	50	105	78	100	2	4 x DIN 931 M10-40 12.9	6 x DIN 931 M10-50 8.8	40030109K
30	A	10,5	65	105	100	120	2	4 x DIN 931 M10-40 12.9	6 x DIN 931 M10-50 8.8	40030112K
35	A	11,5	63,5	105	108	127	4	4 x DIN 931 SAE 7/16-45 12.9	6 x DIN 931 M10-60 12.9	40035106K
35	A	10,5	63,5	105	82,5	102	2	4 x DIN 931 M10-45 12.9	6 x DIN 931 M10-60 12.9	40035107K
35	A	10,5	65	105	100	120	4	4 x DIN 931 M10-45 12.9	6 x DIN 931 M10-60 12.9	40035108K
35	A	12,5	63,5	105	108	130	4	4 x DIN 931 M12-45 12.9	6 x DIN 931 M10-60 12.9	40035109K
35	B	10,5	60	107	80	102	5	4 x DIN 931 M10-45 12.9	6 x DIN 931 M10-60 12.9	40035111K
35	A	11,5	63,5	105	108	127	4	8 x DIN 931 SAE 7/16-45 12.9	6 x DIN 931 M10-60 12.9	40035112K
35	A	10,5	50	107	78	100	2	4 x DIN 931 M10-45 12.9	6 x DIN 931 M10-60 12.9	40035110K
35	A	12,5	63,5	105	108	130	4	8 x DIN 931 M12-45 12.9	6 x DIN 931 M10-60 12.9	40035113K
40	B	12,5	63,5	126	98,42	121	4	6 x DIN 931 M12-45 12.9	6 x DIN 931 M12-70 12.9	40040106.1K
40	A	11,5	63,5	126	108	127	4	4 x DIN 931 SAE 7/16-45 12.9	6 x DIN 931 M12-70 12.9	40040106K
40	A	10	63,5	126	82,5	102	4	4 x DIN 931 M10-45 12.9	4 x DIN 933 M10-25 8.8	40040107K
40	A	12,5	63,5	126	108	130	4	4 x DIN 931 M12-45 12.9	6 x DIN 931 M12-70 12.9	40040108K
40	A	10,5	65	126	100	121	4	4 x DIN 931 M10-45 12.9	6 x DIN 931 M12-70 12.9	40040109K
45	A	13	76,2	140	120,7	152	4	6 x DIN 931 SAE 1/2-50 12.9	6 x DIN 931 M12-90 12.9	40045107K
45	A	11,5	63,5	140	108	127	4	4 x DIN 931 SAE 7/16-50 12.9	6 x DIN 931 M12-90 12.9	40045108K
45	B	17	76,2	141	120,6	146	4	6 x DIN 931 M16-50 12.9	6 x DIN 931 M12-90 12.9	40045109K
50	A	13	76,2	146	120,7	152	4	6 x DIN 931 SAE 1/2-50 12.9	6 x DIN 931 M12-90 12.9	40050107K
50	B	17	76,2	148	120,7	146	4	6 x DIN 931 M16-50 12.9	6 x DIN 931 M12-90 12.9	40050108K
50	A	M12	63,5	146	108	127	4	4 x ESPÁRRAGO M12-W7/16 L45 8.8	6 x DIN 931 M12-90 12.9	40050109K
50	B	12	63,5	148	98,4	121	4	6 x DIN 931 M12-50 12.9	6 x DIN 931 M12-90 12.9	40050110K
50	A	11,5	63,5	140	108	127	4	4 x DIN 931 SAE 7/16-50 12.9	6 x DIN 931 M12-90 12.9	40050112K



ASSEMBLY INSTRUCTIONS
INSTRUCCIONES DE MONTAJE



Torque / Par de apriete		
Screw Rosca	Grade Calidad	Torque Par
M8	12.9	4 kg x m
M10	8.8	5 kg x m
M10	12.9	8.3 kg x m
M12	12.9	14.5 kg x m

* Clamp-on coupling + adapter / Platina eje + adaptador

** F-114 Zinc Plated / F-114 Cincado

This pack consist of a ductile cast iron clamp-on coupling, with all its needed bolting to assemble on the gearbox and shaft. Each bolt is supplied with its corresponding washers and nuts.

El pack se compone de una platina tipo abrazadera de fundición nodular, con toda la tornillería necesaria para su montaje con el eje y la transmisión. Cada tornillo se suministra con sus arandelas y tuercas correspondientes.

CLAMP-ON COUPLING PACK									
PACK PLATINA EJE									
over 100 to 300	over 30 to 100	over 6 to 30	from 0 to 6	Tolerance Class DIN-7168	Material	Finish	Treatment	Remove All Burrs And Sharp Edges	SCALE
±0.2	±0.15	±0.1	±0.05	Fine	DRAWN OSCARV	MODIFIED MIGUEL A.	CHECKED P.IGLESIAS	DRAWN DATE 28/12/2020	LAST DATE REV. 23/09/2024
±0.5	±0.3	±0.2	±0.1	Medium	Sole		SOLE, S.A.		17C1
±1.2	±0.8	±0.5	±0.2	Coarse	Sole		SOLE, S.A.		A

TABLE OF PART NUMBERS BY MODEL
TABLA DE REFERENCIAS POR MODELO

Ø Eje / Shaft		19	22	25	30	35	40	45	50
Modelo	Fabricante								
AS-16	BONFIGLIOLI	-	40022107K	40025117K	-	-	-	-	-
BW Vdrive	BORG-WARNER	-	-	-	40030108K	40035106K	40040106K	40045108K	40050109K
BW-71C	BORG-WARNER	-	-	-	40030108K	40035106K	40040106K	40045108K	40050109K
BW-72C	BORG-WARNER	-	-	-	40030108K	40035106K	40040106K	40045108K	40050109K
I10	EPROPULSION	40019109K	40022109	40025109K	40030109K	40035110K	-	-	-
I20	EPROPULSION	40019109K	40022109	40025109K	40030109K	40035110K	-	-	-
K45A	KANZAKI	-	-	-	-	40035109K	40040108K	-	-
KBW10E	KANZAKI	-	-	40025109K	40030109K	-	-	-	-
KBW20	KANZAKI	-	-	-	40030112K	40035108K	-	-	-
KBW21	KANZAKI	-	-	-	40030112K	40035108K	-	-	-
KM2P	KANZAKI	-	-	40025109K	40030109K	-	-	-	-
KM3A	KANZAKI	-	-	40025109K	40030109K	-	-	-	-
KM4A	KANZAKI	-	-	-	40030112K	40035108K	40040109K	-	-
KMH4A	KANZAKI	-	-	-	40030112K	40035108K	40040109K	-	-
KMH50A	KANZAKI	-	-	-	-	-	40040106K	40045108K	40050109K
PRM 1000	PRM	-	-	-	-	-	-	40045107K	40050107K
PRM 120	PRM	-	40022106K	40025106K	40030106K	40035107K	-	-	-
PRM 1500	PRM	-	40022106K	40025106K	40030106K	40035107K	-	-	-
PRM 160	PRM	-	-	-	40030108K	40035106K	40040106K	40045108K	40050109K
PRM 260	PRM	-	-	-	40030108K	40035106K	40040106K	40045108K	40050109K
PRM 302	PRM	-	-	-	-	-	-	40045107K	40050107K
PRM 402	PRM	-	-	-	-	-	-	40045107K	40050107K
PRM 601	PRM	-	-	-	-	-	-	40045107K	40050107K
PRM 750	PRM	-	-	-	-	-	-	40045107K	40050107K
PRM Delta	PRM	-	40022106K	40025106K	40030106K	40035107K	-	-	-
Ronim III	SOLÉ DIESEL	40019107K	-	40025107K	-	-	-	-	-
Ronim IV	SOLÉ DIESEL	-	40022106K	40025106K	40030106K	40035107K	-	-	-
SMI-R	SOLÉ DIESEL	-	40022106K	40025106K	40030106K	40035107K	40040107K	-	-
SMI-R2	SOLÉ DIESEL	-	40022106K	40025106K	40030106K	40035107K	40040107K	-	-
SMI-R3	SOLÉ DIESEL	-	40022106K	40025106K	40030106K	40035107K	40040107K	-	-
TM170	TECHNODRIVE	-	-	-	40030108K	40035106K	40040106K	40045108K	40050109K
TM265	TECHNODRIVE	-	-	-	-	-	-	40045109K	40050108K
TM265A	TECHNODRIVE	-	-	-	-	-	-	40045109K	40050108K
TM345A	TECHNODRIVE	-	-	-	40030108K	40035106K	40040106K	40045108K	40050109K
TM-485A	TECHNODRIVE	-	-	-	40030108K	40035109K	40040108K	40045108K	40050109K
TM545A	TECHNODRIVE	-	-	-	40030108K	40035106K	40040106K	40045108K	40050109K
TM880A	TECHNODRIVE	-	-	-	40030108K	40035106K	40040106K	40045108K	40050112K
TM93	TECHNODRIVE	-	-	-	40030108K	40035106K	40040106K	40045108K	40050109K
TM93A	TECHNODRIVE	-	-	-	40030108K	40035106K	40040106K	40045108K	40050109K
TMC40	TECHNODRIVE	-	40022106K	40025106K	40030106K	40035107K	-	-	-
TMC60	TECHNODRIVE	-	40022106K	40025106K	40030106K	40035107K	-	-	-
TTMC35A2	TECHNODRIVE	-	40022106K	40025106K	40030106K	40035107K	-	-	-
TTMC35P	TECHNODRIVE	-	40022106K	40025106K	40030106K	40035107K	-	-	-

Ø Eje / Shaft		19	22	25	30	35	40	45	50
Modelo	Fabricante								
M3P	VOLVO	-	-	40025109K	40030109K	-	-	-	-
Volvo HS-1	VOLVO	-	-	-	40030108K	40035106K	40040106K	40045108K	40050109K
Volvo HS-1A	VOLVO	-	-	-	40030108K	-	-	-	-
Volvo HS-25A	VOLVO	-	-	-	-	40035106K	40040106K	40045108K	40050109K
Volvo HS-45-A	VOLVO	-	-	-	-	-	40040106K	-	-
Volvo HS-63AE	VOLVO	-	-	-	-	-	40040106K	40045108K	40050109K
Volvo MS-25-A	VOLVO	-	-	-	40030107K	40035111K	-	-	-
Volvo MS-25-L	VOLVO	-	-	-	40030107K	40035111K	-	-	-
Volvo MS-2A	VOLVO	-	-	40025108K	40030107K	40035111K	-	-	-
Volvo MS-2A-L	VOLVO	-	-	40025108K	40030107K	40035111K	-	-	-
Volvo MS-4	VOLVO	-	-	-	40030108K	40035106K	40040106K	40045108K	40050109K
Volvo MS-45-A	VOLVO	-	-	-	-	40035106K	-	-	-
IRM220A	ZF	-	-	-	-	-	-	-	40050110K
ZF-100	ZF	-	40022106K	40025106K	40030106K	40035107K	-	-	-
ZF-125	ZF	-	40022106K	40025106K	40030106K	40035107K	-	-	-
ZF-150-A	ZF	-	40022106K	40025106K	40030106K	40035107K	-	-	-
ZF-150-V	ZF	-	40022106K	40025106K	40030106K	40035107K	-	-	-
ZF-250	ZF	-	40022106K	40025106K	40030106K	40035107K	-	-	-
ZF-250-A	ZF	-	-	-	40030106K	-	-	-	-
ZF-35	ZF	-	40022106K	40025106K	40030106K	40035107K	-	-	-
ZF-360-H	ZF	-	-	-	40030108K	40035106K	-	40045108K	40050109K
ZF-40	ZF	-	40022106K	40025106K	40030106K	40035107K	-	-	-
ZF-450-A	ZF	-	-	-	40030108K	40035106K	-	40045108K	40050109K
ZF-450-H	ZF	-	-	-	40030108K	-	-	-	-
ZF-450-V	ZF	-	-	-	-	40035106K	-	40045108K	40050109K
ZF-50	ZF	-	40022106K	40025106K	40030106K	40035107K	-	-	-
ZF-630-A	ZF	-	-	-	40030108K	40035106K	-	40045108K	40050109K
ZF-630-H	ZF	-	-	-	40030108K	40035106K	-	40045108K	40050109K
ZF-630-V	ZF	-	-	-	40030108K	40035106K	-	40045108K	40050109K
ZF-63A	ZF	-	-	-	-	40035112K	-	-	-
ZF-63IV	ZF	-	-	-	-	40035112K	-	-	-
ZF-68IV	ZF	-	-	-	-	40035112K	-	-	-

over 100 to 300		±0.2		CLAMP-ON COUPLING PACK	
over 30 to 100		±0.15		PACK PLATINA EJE	
over 6 to 30		±0.1		MATERIAL	FINISH
from 0 to 6		±0.05		TREATMENT	Remove All Burrs And Sharp Edges
Tolerance Class DIN-7168		Fine		DRAWN OSCAR V	MODIFIED MIGUEL A.
		Medium		CHECKED P.IGLESIAS	DRAWN DATE 28/12/2020
		Coarse		LAST DATE REV. 23/09/2024	
		Medium		Sole SOLE, S.A.	
				17C1	
				A	